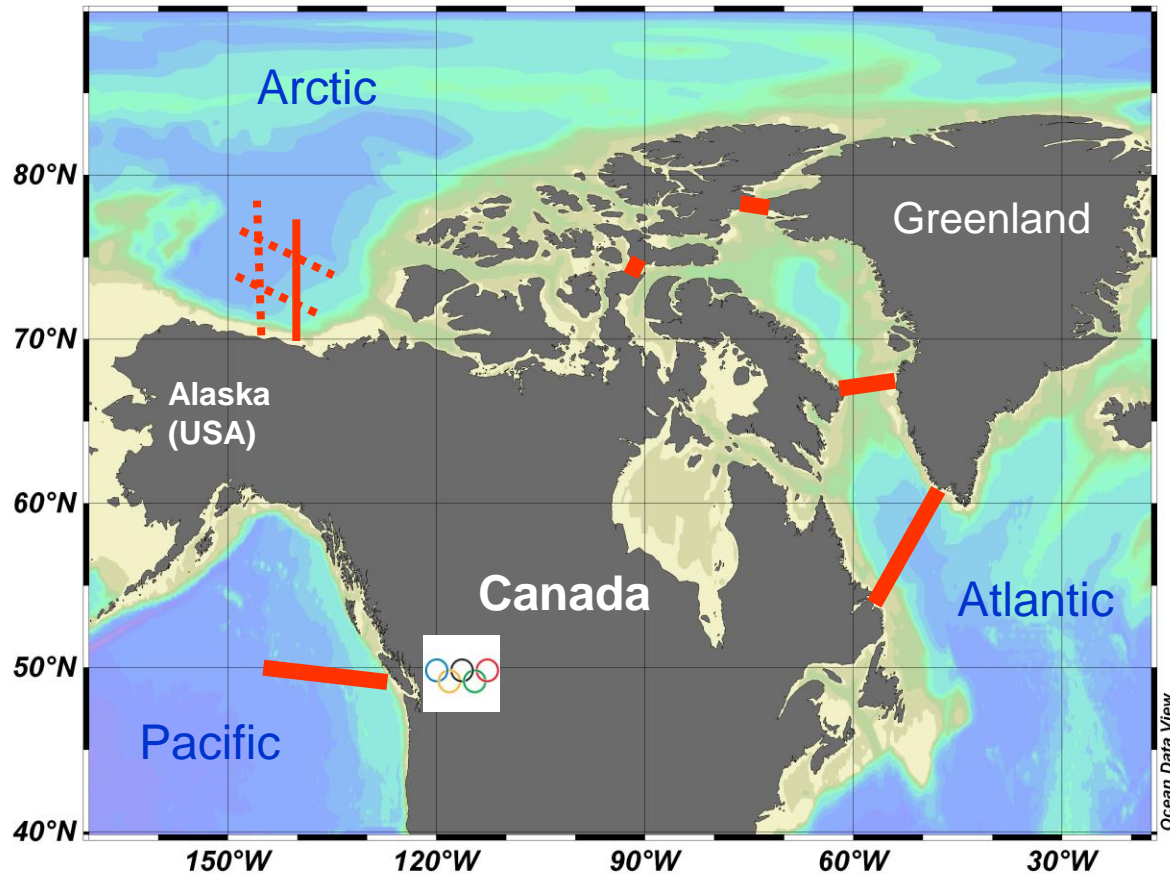


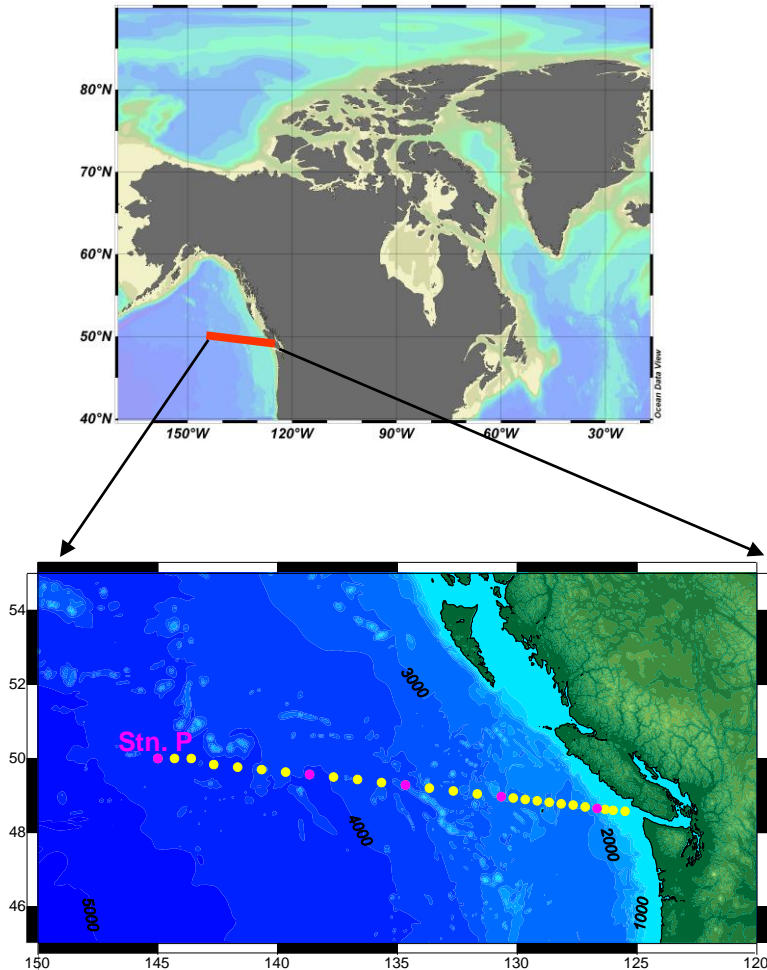
Canadian Programs

Atlantic + Arctic + Pacific

Kumiko Azetsu-Scott
Department of Fisheries and Oceans
Bedford Institute of Oceanography



Sub-Polar North Pacific Line P



- DFO-Canada, Institute of Ocean Sciences
- Since 1959 – hydrography and chemistry)
- On going*
- Three times a year (Feb, May/Jun and Aug/Sep)
- Underway (pCO₂, pigments, DMS)
- Water samples (nutrients, Chl.a, DIC, A_T, pH, O₂, DMS, DMSP)
- Biology (IOS)
- Mooring (with PMEL/NOAA)

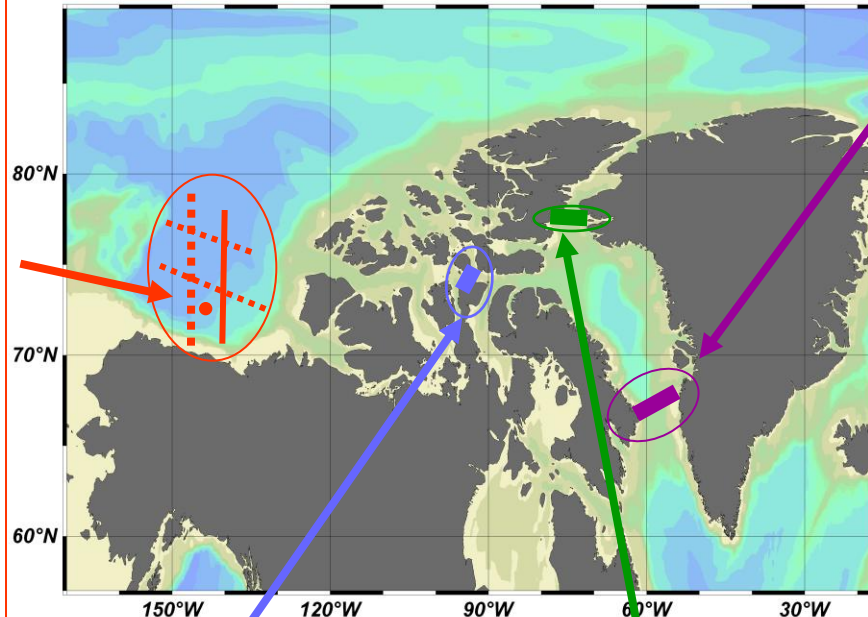
<http://www.pac.dfo-mpo.gc.ca/science/oceans/data-donnees/line-p/index-eng.htm>

Arctic

Canada Basin and the Canadian Arctic Archipelago

Canada Basin, JOIS, from the shore to the ice)

- 1995, 1997 and 2003-2014 (annual)
- Chemistry (DFO-Canada, IOS)
- Hydrography (DFO-Canada, IOS, JAMSTEC, Japan)
- Mooring (WHOI, USA)
- Biology (DFO, Canada)
- DIC, T_A , nutrients, O_2 , some CFCs, O-18, Ba



Davis Strait

- Since 2004- (annual)
- On going* (2011-?)
- Hydrography (UW, USA and BIO, Canada)
- Chemistry (DFO-Canada, BIO)
- DIC, T_A , O-18, nutrients
- Mooring
- Glider

Barrow Strait

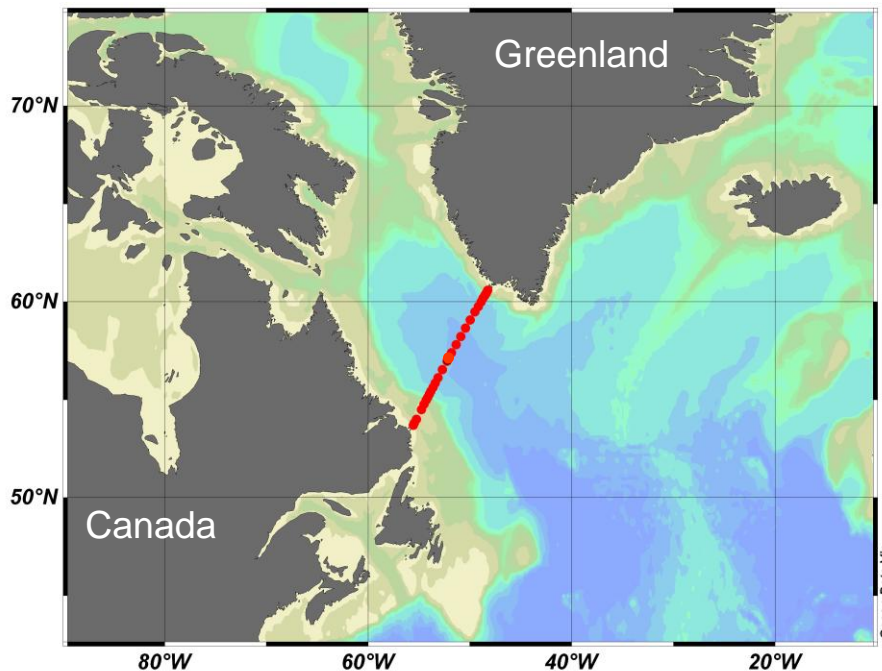
- DFO-Canada, BIO
- Since 1998- (annual)
- On going*
- DIC, T_A , O-18, nutrients
- biology
- Mooring, ice-thickness

Nares Strait

- DFO-Canada, IOS and BIO, OSU
- 1997, 2003, 2009
- DIC, T_A , O-18, nutrients
- Mooring

The Labrador Sea (AR7W)

Sub-Polar North Atlantic (deep convection region)



- DFO-Canada, Bedford Institute of Oceanography
- Since 1990- for hydrography
- Since 1991- chemistry
- Since 1994- biology
- annual (May-July)
- on going
- DIC, T_A , pH, O_2 , nutrients, CFCs, biology, POC, DOC

- Funding for all Canadian programs with * are pending
- All Canadian Data collected by DFO are archived at *Integrated Science Data Management (ISDM)* (<http://www.meds-sdmm.dfo-mpo.gc.ca/isdm-gdsi/index-eng.html>) and BioChem (http://www.meds-sdmm.dfo-mpo.gc.ca/biochem/biochem_e.htm).